

Latgale Planning Region Development Perspectives



Jānis Daugavietis
Latgale Planning Region



LATGALE

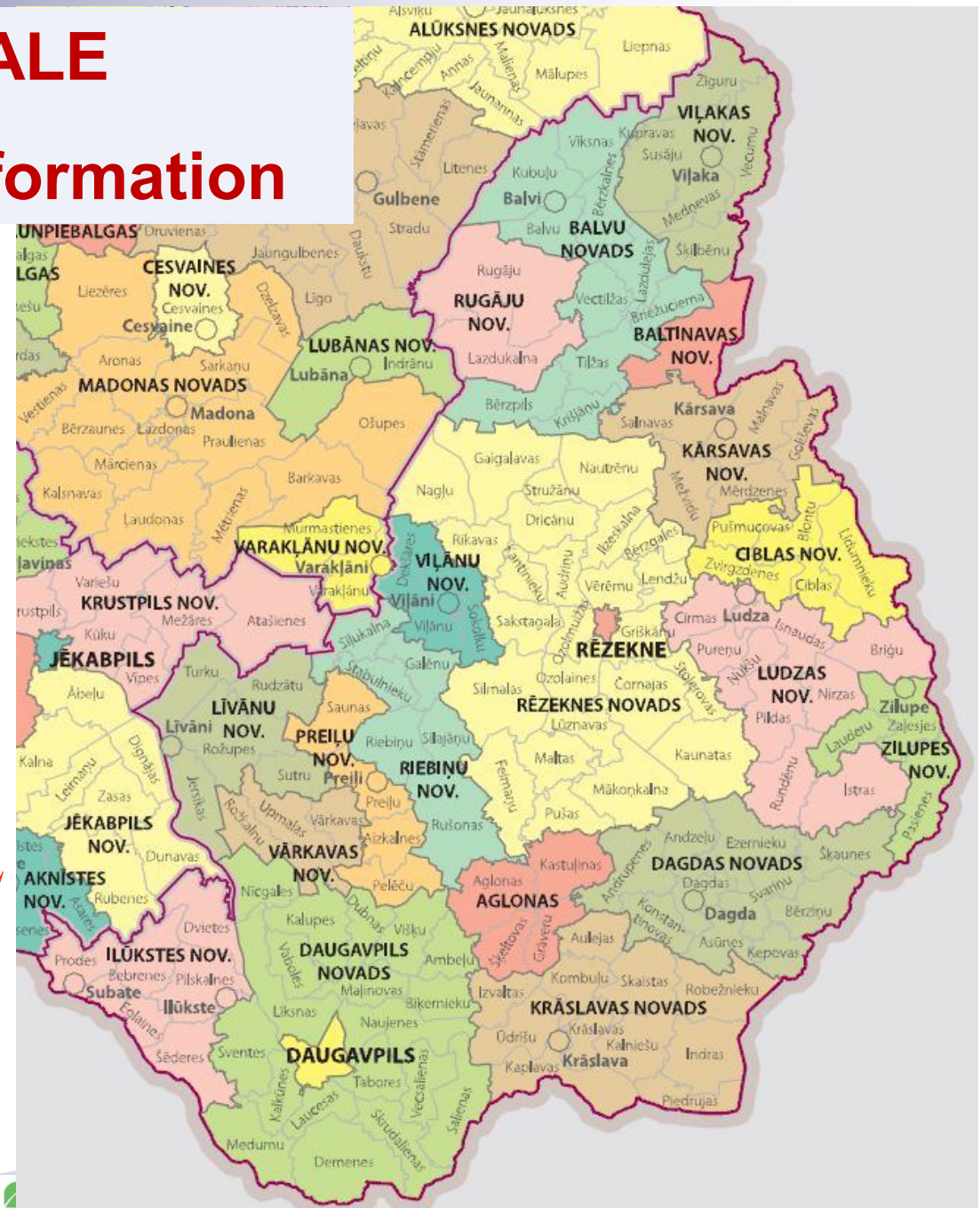
- general information

Population:
304 224 (21.01. 2012.)

Unemployment rate:
19,8% (21.01.2012.)

GDP/per capita: 3926 LVL

Territory: 14 549 km²





LATGALE REGION in figures (economics)

Indicator	Latgale	Latvia
Active enterprises	16 699 (13%)	128 984
Average gross monthly salary	247 LVL (69,8 %)	354 LVL

Active enterprises in Latgale region
16 699 (*21 enterprises / 1000 people*)

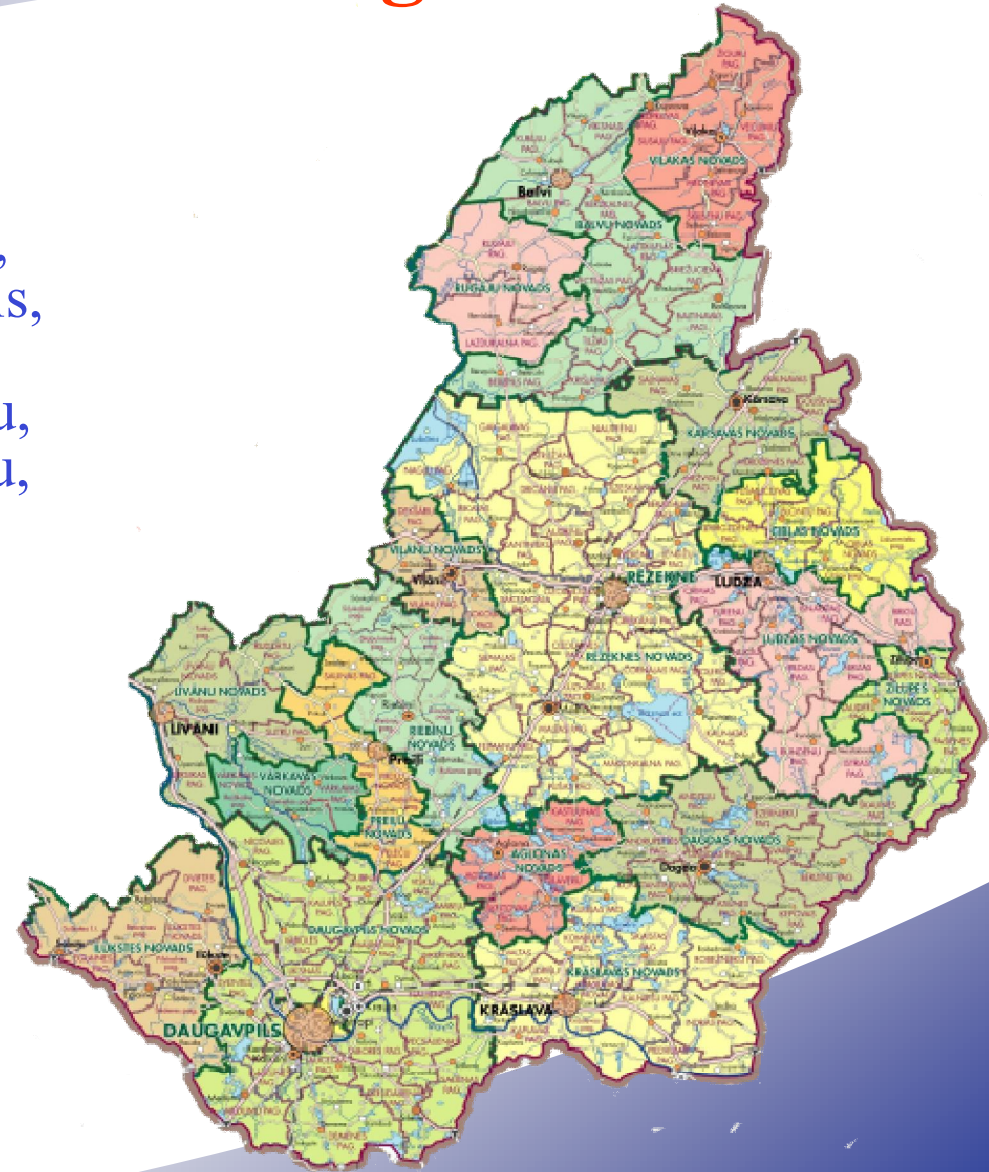
Riga region – *36 enterprises / 1000 people*
European Union - *50 enterprises / 1000 people*

Large enterprises – 29
Medium enterprises – 1191
Small enterprises – 985
Micro enterprises – 15 494



Municipalities in Latgale

- **19 counties** (Aglonas, Baltinavas, Balvu, Ciblas, Dagdas, Daugavpils, Ilūkstes, Krāslavas, Līvānu, Ludzas, Preiļu, Rēzeknes, Riebiņu, Rugāju, Vārkavas, Viļakas, Viļānu, Zilupes)
- **2 national importance centres** (Daugavpils, Rēzekne)
- **5 regional importance centres** (Balvi, Ludza, Krāslava, Preiļi, Līvāni)
- **7 counties importance centres** (Dagda, Ilūkste, Kārsava, Subate, Viļaka, Viļāni un Zilupe)



TOTAL 21 municipalities

Latgales plānošanas reģions



Latgale Planning Region (LPR) Development Council



- The decision-making body of Latgale Planning Region, consisting of **21 chairpersons and deputies from Latgale municipalities**;
- **Represents all municipalities in Latgale region: one deputy from each municipality.**



Latgale Planning Region functions:

- Elaboration of Latgale Region Planning documents (spatial planning, development programmes, etc.);
- Coordination of planning documents on the regional and national level;
- Ensuring of cooperation between Latgale local governments and state institutions in the issues of regional development;
- Defence of Latgale region interests on the state level;
- Organization of regional local routes of public transport;
- Organization of cultural events in Latgale region.

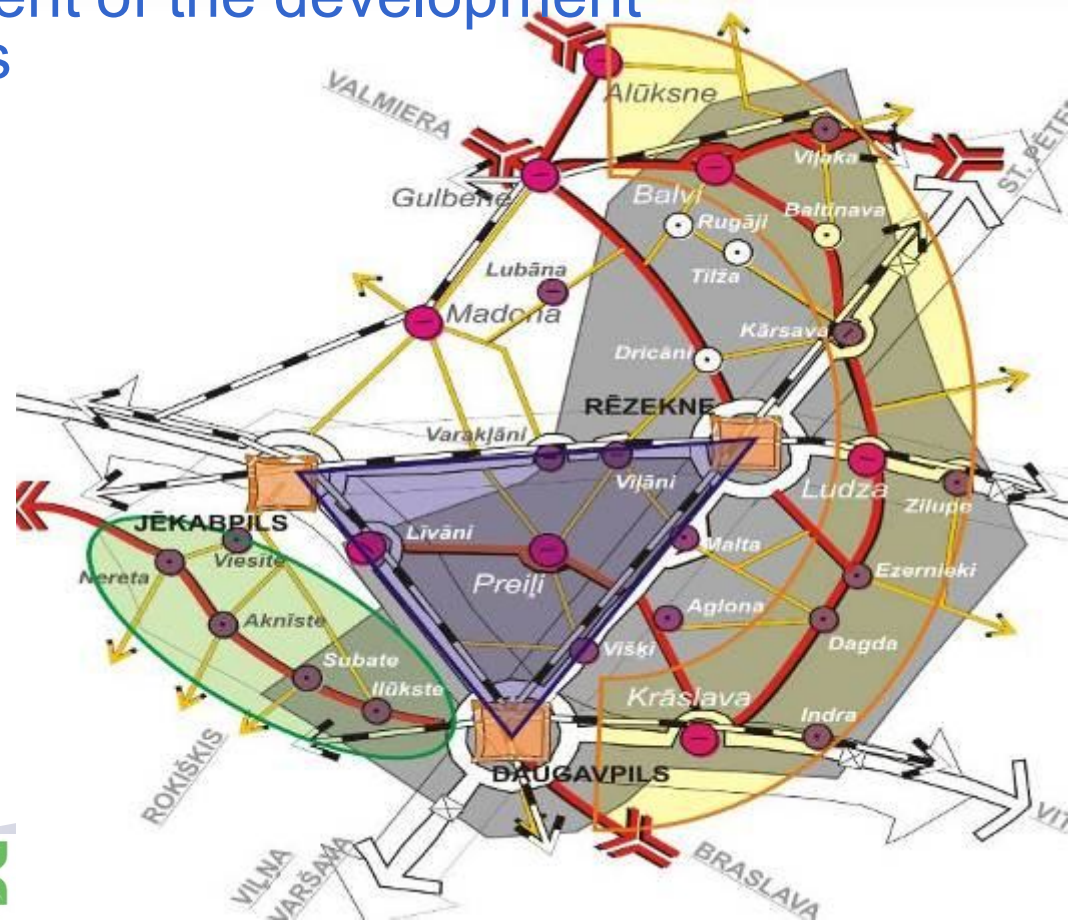


Strategic activities of LPR planning

LPR spatial planning (2006-2026)

Long-term spatial planning document that determines Latgale Planning Region spatial development

- Tool for the enforcement of the development programme objectives
- Creates preconditions for the logically integrated and practically implemented long-term regional development
- Its objective is to provide the guidelines for the development of the local spatial planning and to make the basis for the national planning





Strategic activities of LPR planning

- LPR has elaborated and confirmed:
 - LPR long-term development strategy 2030
 - LPR development programme (2010-2017)
 - Economic profile for the regional development
- to propose in the next programming period as the Integrated Regional Operational Programme



LATGALES STRATĒGIJA 2030

SCANDINAVIA

H
S



Rīga



Balvi

Rezekne

Līvāni

Preiļi

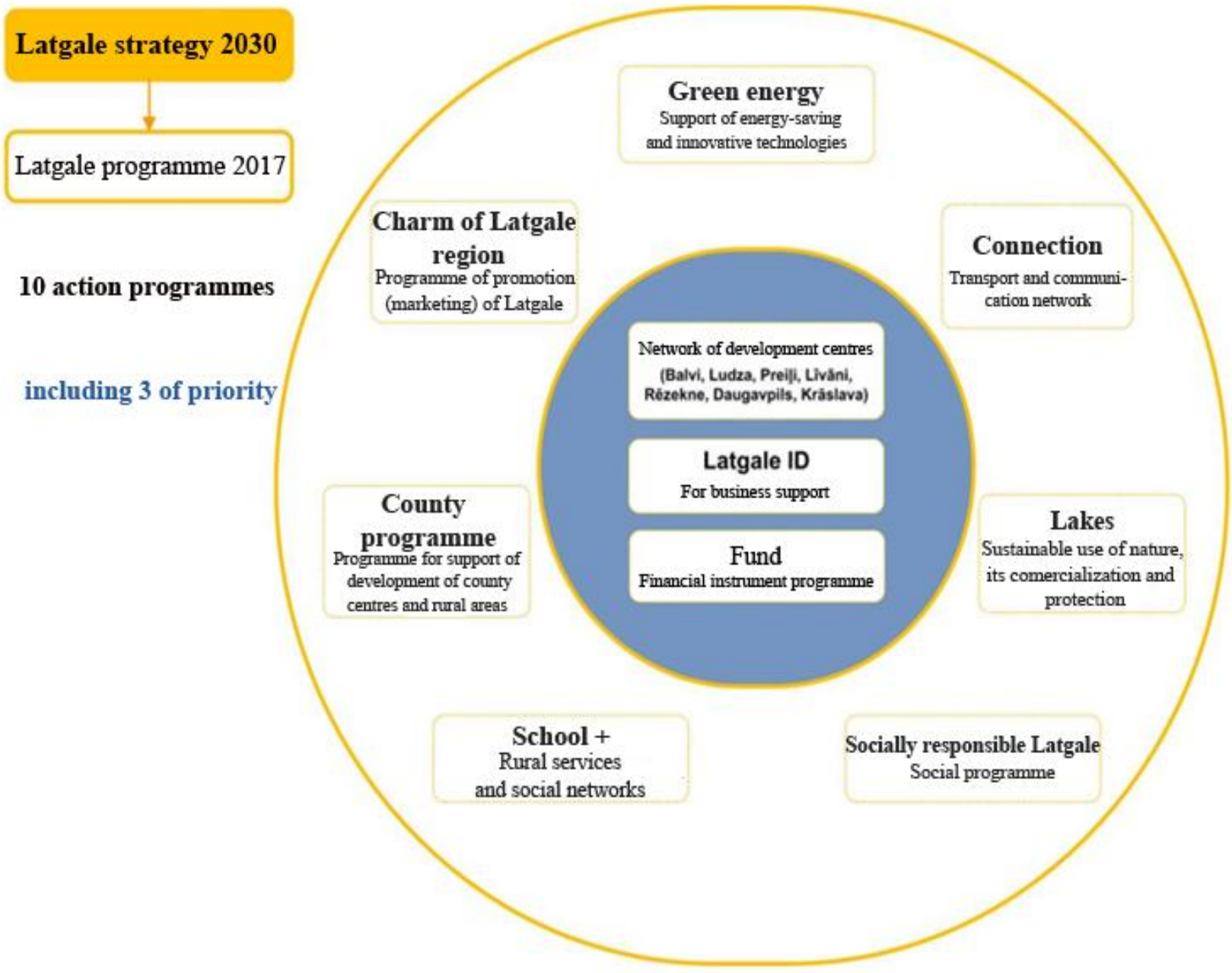
Daugavpils

Kristāvs

RUSSIA

BELORUSSIA

EU



THE BIG GOALS OF THE STRATEGY

The main goal of the Strategy is to provide income for all the inhabitants of Latgale region

The big goal of the strategy is to achieve more rapid economic development of the region in order to raise income of people, maintain and enhance the rich potential of Latgale and make Latgale an attractive living environment for the future generations.

THE BIG GOALS OF THE STRATEGY

To do this changes are necessary in the economic structure of the region by significantly increasing the share of the private sector in generation of the added value (meanwhile preserving the jobs in the public sector which has and will have an important role in the development of the region)

The Strategy will facilitate gradual rise in income, in 2030 reaching the level of 60% of EU average gross monthly salary.

Successful implementation of the strategy will be proven by the population of the region, which will reach 300 000 people by year 2030



STRATEGIC DIRECTIONS

- SKILLS
- CONNECTIONS
- SMART MANAGEMENT
- EFFICIENT ENTERPRISES



PORTRAIT OF LATGALE

FINLAND pop. - 5 mil
ESTONIA pop. - 1,3 mil

St. Petersburg and its vicinity
population - 5 mil.

Pskov
pop. - 200.000



RUSSIA
population - 140 mil.

Moscow and
its vicinity
pop. - 17 mil.

Latgale region is rich with
forest resources - forests take
up 561,8 thousand ha
(39% of total region territory)

Land that can be used for agriculture
takes up 45% of region territory -
larger proportion than in other
planning regions, except Zemgale.

SWEDEN
population - 9 mil.

Riga and its vicinity
population - 1 mil.

JĒKABPILS

Līvāni

Preiļi

DAUGAVPILS

LITHUANIA
pop. - 3,2 mil.

POLAND
pop. - 38 mil.

Vilnius
pop. - 550.000

BELARUS
pop. - 10 mil.

Minsk
pop. - 2 mil.

- Identity of Latgale - latgalian is proud of Latgale. Latgalian language. Diverse, varied cultural heritage.

Human scale

- Basilica of Aglona is a religious centre of regional scale

- Daugavpils - birthplace of Mark Rotko



It is described by words - network, cooperation and speed.

SMART LATGALE

2030



Latgale has good relations with neighboring territories - for St. Petersburg regions this is a four season recreation place, for Belarus - cooperation partner for intergratio in EU (especially by using experience of Daugavpils)

Higher educational establishments of Latgale form the "foundation of excellence" of the region.

Operation of the Daugavpils international airport facilitates the accessibility of the region.

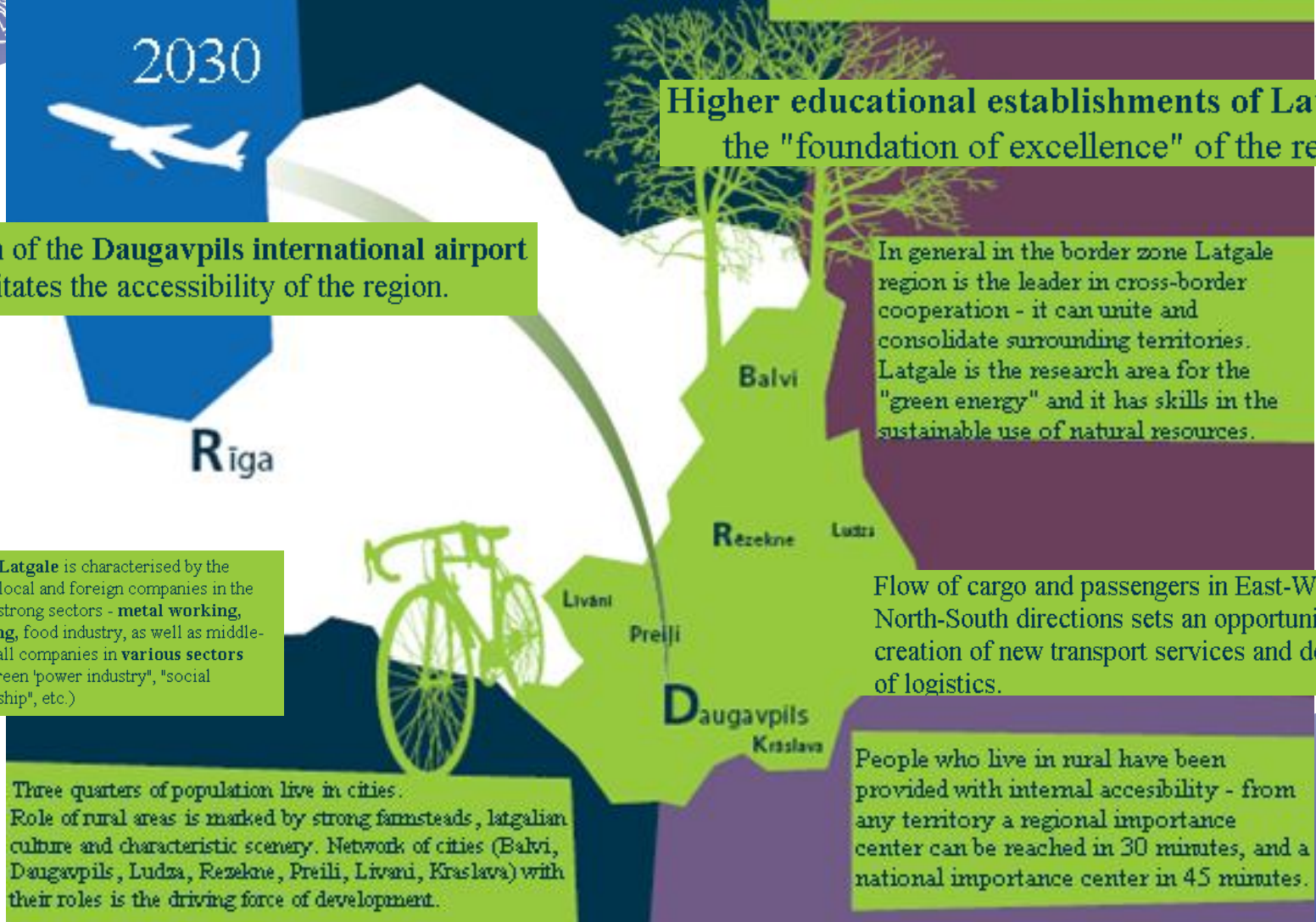
In general in the border zone Latgale region is the leader in cross-border cooperation - it can unite and consolidate surrounding territories. Latgale is the research area for the "green energy" and it has skills in the sustainable use of natural resources.

Business in Latgale is characterised by the operation of local and foreign companies in the traditionally strong sectors - metal working, woodworking, food industry, as well as middle-sized and small companies in various sectors (logistics, "green 'power industry", "social entrepreneurship", etc.)

Flow of cargo and passengers in East-West and North-South directions sets an opportunity for creation of new transport services and development of logistics.

Three quarters of population live in cities. Role of rural areas is marked by strong farmsteads, latgalian culture and characteristic scenery. Network of cities (Balvi, Daugavpils, Ludza, Rēzekne, Preiļi, Līvāni, Kraslava) with their roles is the driving force of development.

People who live in rural have been provided with internal accesibility - from any territory a regional importance center can be reached in 30 minutes, and a national importance center in 45 minutes.





PR activities in projects

- **Promotion and regional scale projects development**
- **Crossborder cooperation programmes**
- **Enterpreneurship development**
- **Tourism development and promotion**
- **Transport development and promotion**
- **Spatial planning and development**
- **Social service and health care development**
- **Culture heritage and development**
- **etc**



Strategic activities of LPR planning

Initiate and implement the activities of regional importance both in EU SF, and Cross Border Cooperation Programmes (BY, LT, RU), e.g. in the area of entrepreneurship and tourism support:

- **WATER JOY** (Joint Water-Based Tourism Offering in Latgale Region and Utena, 1,5 million EUR, 10 public infrastructure sites, 11 technical objects, international marketing campaign, 10 new tourism products) LV-LT
- **BELLA DVINA** (Support for tourism in Latgale, Polock, Vitebsk regions)
- **BELLA DVINA-2** (Tourism, Latgale, Lithuania, Belarus, 1,6 million EUR)
- **HEALTH IS WEALTH** (Sport, healthy lifestyle, Latgale, Lithuania, Belarus, 1,5 million EUR)
- **VILLAGE HERITAGE** (Promotion of entrepreneurship support in 10 transborder villages, 0,5 million EUR) LV-LT
- **REGION INVEST** (Fostering Capacity for Business Development in Latgale-Utena Cross Border Region, 0,3 million EUR, LV-LT)
- **ELABORATION AND IMPLEMENTATION OF QUALITY MANAGEMENT SYSTEM IN LPR RĒZEKNE SOCIAL CARE DEPARTMENT** (Elaborated and implemented quality management system in Rēzekne city and in the whole region)
- **DEVELOPMENT OF SOCIAL SERVICE SYSTEM IN LATGALE PLANNING REGION** (To develop services of alternative social care and social rehabilitation)



Positive experience and results National/regional/local

Implementation and programming of cross border cooperation programmes and instruments

- **LV-LT-BY, LT-LV, LV-EE-RU, Norwegian, Swiss FI (Financial Instrument)**
 - Possibility to deal with problems, for which there is no funding from EU SF
 - Possibility for the municipalities and the region to cooperate and plan together with neighboring countries - LT, BY, RU
 - Cooperation agreements have been signed with Vitebsk and Pskov regions
 - Latgale strategy 2030, development program, Pskov development concept have been developed
 - Specific results – LPR made decisions about strategic projects of the region - Daugavpils airport, Vientuļi–Ludonka border checkpoint development
- Implementation of the projects with involvement of many partners
 - Mechanism to reduce management costs
 - To achieve development of larger territory and involvement of municipalities



Positive experience and results

National/regional/local

Regional structural funds information center

Target groups: regional institutions, municipalities, NGO (Non governmental organization), entrepreneurs

- Provision of free consultations and seminars for all target groups in the region on the spot about all the available financial instruments not only in Latvia, but also abroad
- Effective measures of conveying information to definite target groups
- Good cooperation with responsible ministries, agencies, MF (Ministry of Finance), coordination of managing authority
- Provision of information from the primary source
- Feedback, demand from the local level and its involvement
- New experience in Latvia and also an example for “old member states”



To be done immediately:

- **Pilot project for the implementation of Latgale program in 2007-2013 programming period:**
 - Tourism/marketing
 - Support of entrepreneurship/consultations
 - Attraction of investors
 - Industrial territories
- **Planning EU funds for 2014-2020 programming period:**
 - Elaboration of NDP (National Development Plan)
 - Regional programs
 - National programs + Horizontal policy (based on equality)



Functions necessary for regions development

- Entrepreneurships development
- Tourism development
- Culture development
- Regional public transport planning and coordination



Necessary steps

- National development plan (NDP)- the same document with strategy for development and for implementation for all financial resources
- NDP consists from integrated regions development programs/ investments
- One stop agency implementation
- Decentralization of the state functions



Latgale Planning Region & Intelligent Energy Europe

Build up Skills – Latvija „Efficient Energy Building Roadmap for Latvia”.

Main activities to be provided are as following:

- Analysis of national status quo.
- Identification of stakeholders, promotion of their involvement, and establishment of national qualification platform.
- Elaboration of the national qualification roadmap and the action plan.
- Endorsement of National qualification roadmap and action plan at national, regional and local level.
- Participation in EU exchange activities.



INTELLIGENT ENERGY
EUROPE



SEAP+





Build up Skills – Latvija „Efficient Energy Building Roadmap for Latvia”.

EU directive 2010/31/EU on the energy efficiency of buildings has established:

- starting from 2020 all newly constructed buildings should approach zero energy building standards or should achieve a very low energy building criteria and the energy must be produced from renewable energy resources.
- Starting from 31 December, 2018 when renting or purchasing a building all public institutions must choose this kind of buildings.



Build up Skills – Latvija **„Efficient Energy Building Roadmap for Latvia”.**

Similarly, Latvia has undertaken several international commitments by setting specific energy and climate targets:

- to increase energy efficiency by 20% until year 2020;
- to increase the proportion of renewable energy resources in the gross energy end consumption to 40% until year 2020;
- to increase energy efficiency on the final user side achieving 9% energy consumption reduction in the period from 2009 to 2016;
- to raise the level of employment.



Build up Skills – Latvija „Efficient Energy Building Roadmap for Latvia”.

Latgale regional level events

- In accordance with project description are planned 5 regional level events for presenting results of the analysis of national status quo.
- Stakeholders to be invited: local municipalities, vocational schools, training centres, building companies, building utilities maintenance companies, regional departments of national authorities dealing with education, energy, building issues, regional energy agencies, independent experts and other interested parties.



Thank You for attention !

www.latgale.lv