



Baltic Mussel **Eco**

The new Baltic Sea aquaculture industry

Project partners

- East Sweden Energy Agency (Sweden) - Lead Partner
- Novia University of Applied Sciences (Finland)
- Latvian Environmental Investment Fund (Latvia)
- Kurzeme Planning Region (Latvia)





CENTRAL BALTIC INTERREG IV A PROGRAMME 2007–2013

The Programme has three common priorities

- Safe and healthy environment
- Economically competitive and innovative region
- Attractive and dynamic societies

Joint Technical Secretariat Main Office
c/o Regional Council of Southwest Finland

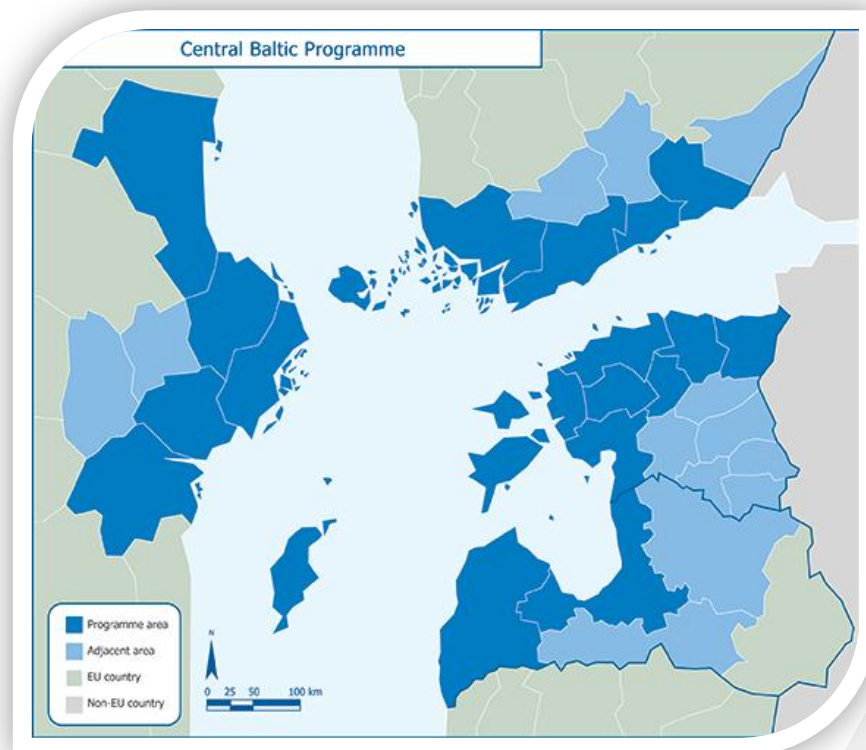
Mailing address

P.O. Box 273
20101 Turku
Finland

Visiting address

Läntinen Pitkätie 35, 5th floor
Tel: +358 2 2100 988
Fax: +358 2 2100 901

Disclaimer: The contents of the website reflect the authors' views.
The Managing Authority of the Central Baltic INTERREG IV A Programme
cannot be held liable for information published by the project partners.







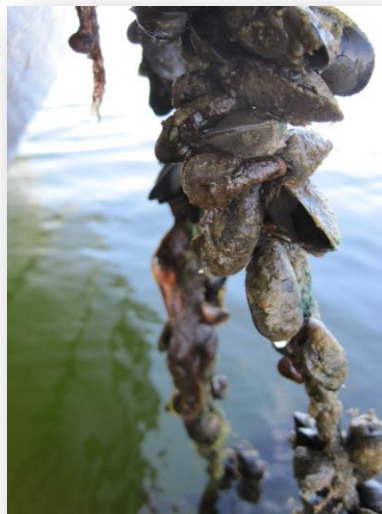
The Baltic EcoMussel project aims to help accelerate the adoption of mussel farming in the Baltic Sea Region by providing information and tools to support investments.



Recent researches shows that commercial farming of mussels in the Baltic Sea Region is viable and offers socio-economic and environmental benefits. Commercial farming of mussels would enable fishing communities to diversify their income sources, create jobs and provide an alternative feedstock for use as feed, in biogas production or in other sectors.



Eutrophication is one of the biggest environmental issues in the Baltic Sea and it will take a lot of efforts to decrease the amount of nutrients in the coastal water.



Blue mussels cleanses the water

One way of decreasing the amount of nutrients in the coastal water is to construct mussel farms. The only thing that is needed is substratum (i.e rope) where blue mussels can attach.

A mussel on a regular basis filtrate particles larger than 0,002 millimeters and smaller than 1 millimeter. A mussel, that is about 3 centimeters large, can filtrate 2-3 liters of water per hour.

Main activities in the project

- Assessment of regulatory conditions and **developing guidelines and business plans** for farmers;
- Assessment of market potential and socio-economic impacts of **large-scale farming**;
- Establishing **methodologies and routines for monitoring and evaluation** of farms;
- Gathering, informing and training key stakeholders from the research community, aquaculture and end-user groups;
- **Transfer the knowledge and experience**

Our challenge on the way

- Only few companies are starting to work in this field in the Baltic Sea Region
- Lack of commercially active mussels farms in the Baltic Sea
- Lack of regulation in Latvia and Lithuania
- Lack of researches in the Baltic Sea of blue mussels (growing and harvesting methods, techniques, biology)
- End-use possibilities are not well known

Expectations (I)

- Visiting mussel farm, which operates in open sea
- Financial information about mussel farming for business plan calculation
- Main threats for mussel farmers, like ice and strong wind, how to avoid from this
- Distribution process
- Cooperation systems and practical experience

Expectations (II)

- Research institution to introduce with its researches in mussels, mussel farming
- Cooperation system, good practice examples
- Most appropriate methods (long lines, ropes etc.)
- Equipment in different farms and its costs
- Harvesting process, when, how many
- Is there any calculation about the water treatment
- Availability of subsidies
- End use – where to distribute products

Did you know that...





Thank you for your attention!

From project idea to its realization – together with Environmental Investment Fund!

Ģertrūdes iela 10/12, Rīga, LV-1010, Latvia

Phone: + 371 67845111

Fax: + 371 67845222

E-mail: pasts@lvif.gov.lv

<http://www.lvif.gov.lv>



Baltic Mussel **Eco**

The new Baltic Sea aquaculture industry